

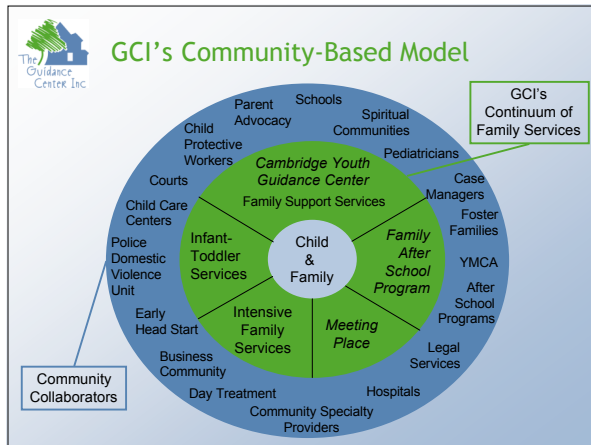

Community-Based Clinical Practice

Presented by
Susan C. Ayers, LICSW
Executive Director
&
Borja Alvarez de Toledo, MEd
Director, Family Services Operation and Program Development




Building a Family-Centered Agency: GCI's Unique Approach

- Act on all available opportunities and create others
 - Multi-year state contracts
 - Pilot projects
 - Grantmaking
 - Fundraising
 - Agency merger
- Strive to bridge gap between research and practice
- Develop best practice models

GCI's "Continuum" Today

	Infant-Toddler Services	Child and Adolescent Services	Intensive Family Services	Family After School Program	Meeting Place	Temporary Care Services
Age Range	0 - 3 years	3 - 19 years	3 - 19 years	3 - 19 years	All Ages	All Ages
Services	<ul style="list-style-type: none"> • Pregnancy and parenting support • Home visits • Occupational, speech, language and physical therapists for children with or at risk for developmental delays • Health assessments 	<ul style="list-style-type: none"> • School community and clinic based multidisciplinary health professionals • Individual and family consultations and case management for parental conflict resolution • Support for child who return home from residential placement • Supervised visitation • Family assessment • Family contact and support 	<ul style="list-style-type: none"> • Intensive clinical and wrap-around services • Intensive clinical and wrap-around services for families, children and adolescents at risk of homelessness • Network of support for families who return home from residential placement • Coordination of CSS family support services in all areas, including Cambridge and Somerville 	<ul style="list-style-type: none"> • After school meals • Homework help • Challenged children and/or families • Use of Family, community resources, projects and games to develop self-esteem and social skills • Family program includes parent support and family centered case conferences 	<ul style="list-style-type: none"> • Bulk supervised visits for parent-child visits • Abuse children's non-custodial parents • Provide care and scheduled and ad-hoc visits • Manage DMR family support activities 	<ul style="list-style-type: none"> • Respite for families of social needs • Children and young adults • Provide care and scheduled and ad-hoc visits • Manage DMR family support activities
Program / Components	<ul style="list-style-type: none"> • Healthy Families of Cambridge and Somerville • Early Head Start • Partnership Program • FRES Link • Cambridge-Somerville Early Intervention 	<ul style="list-style-type: none"> • Cambridge Youth Guidance Center • Children with Voices • Early Childhood Support for at-Risk Families • Family Intervention Program • Community Tutor Program • Crisis Cultural Program • School Based Services • Outreach Services 	<ul style="list-style-type: none"> • Family Advocacy, Stabilization, Support for at-Risk Families • Family Intervention Program • Community Tutor Program • School Based Services • Outreach Services 	<ul style="list-style-type: none"> • Counseling • Case Management • Homework Support • Computer Literacy • Violence Prevention • Parent involvement 	<ul style="list-style-type: none"> • Child Labor and Referral 	<ul style="list-style-type: none"> • In-home Care • Counseling • Advocacy • Case Management
Funding Sources	<ul style="list-style-type: none"> • DPH • Children's Trust Fund • Insurance • Fees • CCBS • Foundations • Contributions • Unlabeled 	<ul style="list-style-type: none"> • DMH • DSS • Insurance • Fees • EOPS • Community Contracts • Unlabeled • Contributions • Foundations 	<ul style="list-style-type: none"> • DMH • DSS 	<ul style="list-style-type: none"> • DMH • DSS • Foundations • Unlabeled • Contributions 	<ul style="list-style-type: none"> • DSS • Fees • Foundations • Contributions 	<ul style="list-style-type: none"> • DMR • Foundations • Contributions
	<p>Legend: CCBS - Community Development Block Grant DMH - Department of Mental Health DPH - Department of Public Health EOPS - Executive Office of Public Safety DSS - Department of Social Services DMR - Department of Mental Health DCR - Department of Children, Youth and Families DCF - Department of Children, Youth and Families DCF - Department of Children, Youth and Families DCF - Department of Children, Youth and Families</p>					



Challenges to Creating a Continuum

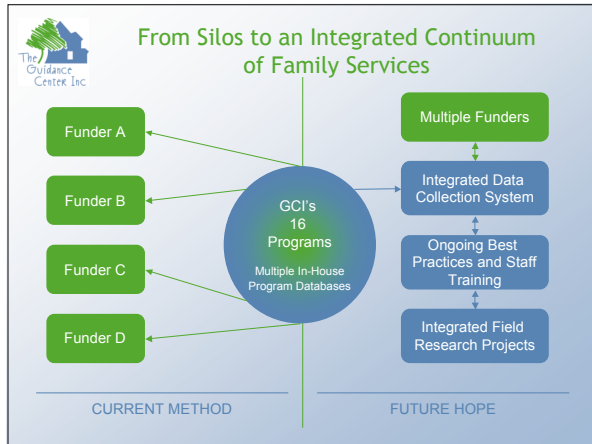
- Discrete program funding streams result in siloed
 - intake processes
 - data collection
 - assessment tools
 - outcome measures
 - performance standards
- Families experience barriers to service continuity
- Staff experience isolated practice
- Field research is constrained by silos

If you can't change the system, change the practice.



From Silos to Continuum: Opportunities Realized

- Nurture family partnerships within which services can be tailored to meet developmental, mental health and family support needs
- Improve application of sophisticated community knowledge and relationships
- Create a robust continuum within which family centered prevention and intervention models may be shaped and evaluated
- Build on synergies between GCI program staff and community colleagues to enhance capacity to hold families over time
- Advocate for system reform



Field Research Successes

- Empirical description of
 - Client population
 - Functional assessment
 - Demographic measures
 - Clinical outcomes
- Correlation of variables with service intensity, duration and cost
- Development of best practice model
 - Family Advocacy, Stabilization and Support Team (FASST)

